

Introduction

Polycool Solar Control inserts are designed to be easily and quickly fitted to 99% of all conservatories with polycarbonate roofs including clear, bronze, blue tinted and opaque finishes. Polycool inserts can be fitted on a DIY basis or if time is at a premium by availing the services of our nationwide Polycool installation service.

Please take time to read the following fitting guide, to help you install Polycool Solar Control inserts into your conservatory roof, once installed, you can relax and enjoy a more comfortable conservatory environment.

Kit supplied

Polycool 'Gold or Silver' Solar Control inserts
Polycool 'unique' insertion rod
Hole punch
Silicone spray
Breather tape (not required for Everlite, Ultralite 500 roof systems)
Polycool film dispenser (not required for Everlite, Ultralite 500 roof systems)

Additional equipment required

A pair of steps
A pair of scissors or a Stanley knife
A screwdriver

Preparation

Arrange your working conditions, organise a comfortable platform and working height. N.B. We recommend fitting in dry weather conditions. Do not fit in wet or windy conditions

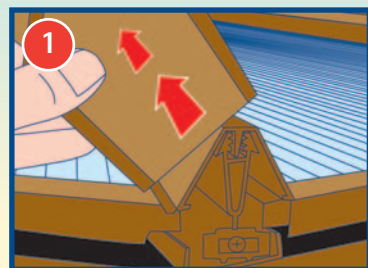
If you have any existing condensation, take off panel end caps on a dry day and leave the channels to dry out before installing the Polycool inserts.

Assemble the Polycool film dispenser (Not required for Everlite and Ultralite roof systems), gently unroll the end of a roll of Polycool film, place into the 'Polycool film dispenser' and push the end of the film through the slit in the side.

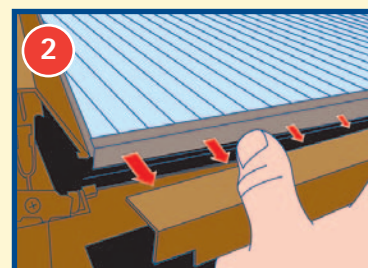
(You may wish to pack the box with an additional piece of cardboard to help secure the roll in place if using a 20 – 25mm wide insert)

Standard polycarbonate roof with a 10mm – 30mm wide channel

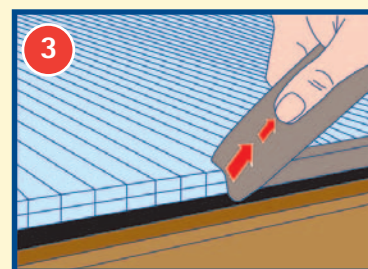
Step by step guide



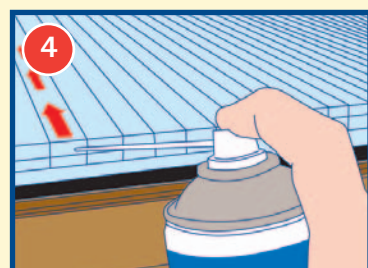
Step One
Carefully remove glazing bar end caps from the roof glazing bars (if these are the push fit type 'take care not to damage the retaining lugs'). If secured by a screw (with a plastic cap) this should be retained for re-fitting.



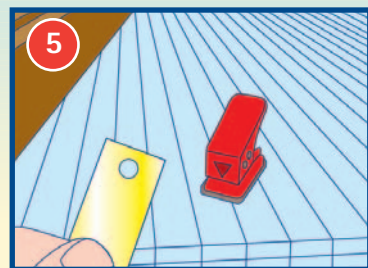
Step Two
Remove panel end cappings, these should be a push fit and easily removed (do not force the end cappings off), if they have been sealed on with a silicone sealant (mastic), slide a sharp implement (Stanley knife) under the end capping to free and remove.



Step Three
Remove any breather tape or aluminium sealing tape. (Replacement breather tape supplied). If any channels require cleaning use the insertion rod with a piece of 'J-cloth or similar material' securely attached.



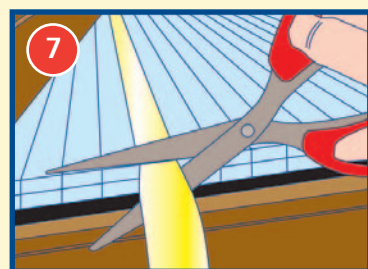
Step Four
To make the installation of Polycool easier, spray a small amount of silicone spray (supplied) into the end of the top channel before inserting the film. N.B. You will only need to spray the silicone into the channel and not onto the insert.



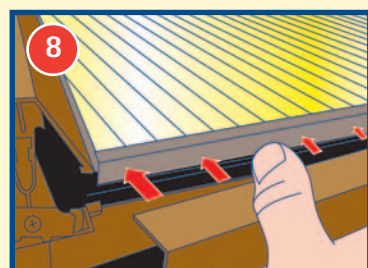
Step Five
Punch a hole towards the end of the insert (Using the hole punch provided)



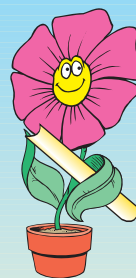
Step Six
Place the Polycool insertion rod into the hole (situated at the end of the insert) and offer to the top channel forming a **U-shape curve** with the 'pimple' side facing down (If installing gold Polycool, the gold side must face down into the conservatory). Ensure the insert is pushed right to the top of the channel taking care not to puncture the end of the sealing tape and check that the film fits correctly. N.B It is important to insert the embossed strips 'PIMPLE SIDE DOWN' (This reduces the surface area and will make it easier to push the insert into the roof channel).



Step Seven
Remove the insertion rod and trim the insert to length with a pair of scissors or a Stanley knife. The insert must be cut flush with the end of the channel for the breather tape and end cappings to fit correctly.



Step Eight
Once all channels have been installed with 'Polycool' replace the breather tape (supplied), panel end cappings and guttering if it has been removed.



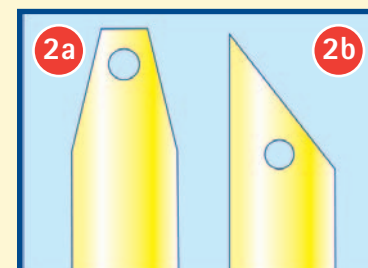
Handy Tips

The insertion rod should be cut a little longer than the longest length of your channels to make it easier to handle. (5 and 7 metre rods are available on request)



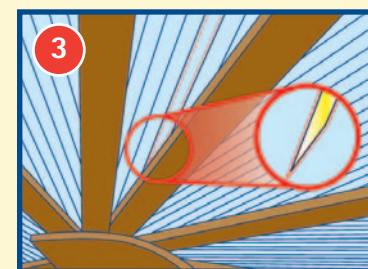
If you have any difficulty sliding the film up the channel – spray the silicone spray (supplied) into the end of the channel and/or fold the film double before punching the hole. (diagram 1)

The top end of the insert can also be chamfered to reduce the initial surface area when inserting the film. (diagram 2a)

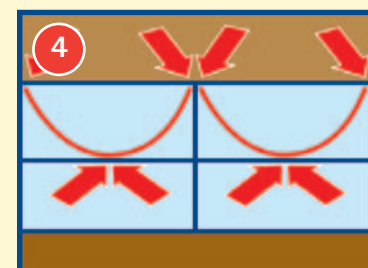


If you have any triangular panels (Victorian, Edwardian styles) it may be necessary to cut the top end of the inserts to match the angle of the glazing bars. (diagram 2b & 3)

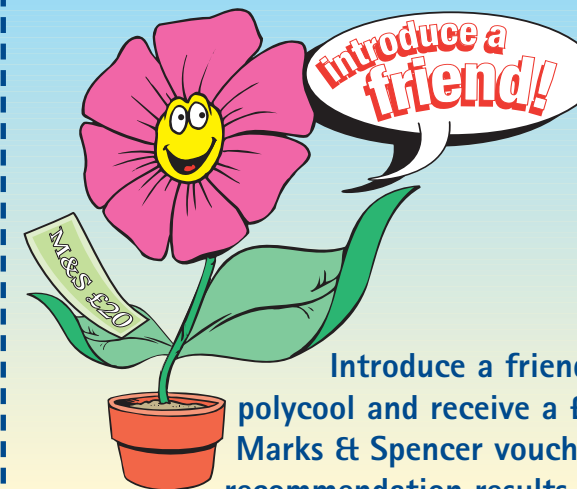
Do not discard any unused roll ends you may have from the main panels, these may be required to fit into the shorter channels.



If the type/style of your channels are different to the original quote and the film is too narrow/wide, contact us direct and we will confirm the correct width of film required for your roof.



It is essential that the film fills the entire channel, check from inside the conservatory and ensure the film is fitting correctly. If you experience any 'light' shining between the channels or you have any concerns, stop immediately and contact the office for further assistance on 01789 766880 or email pol@polycool.co.uk (diagram 4)



Introduce a friend to polycool and receive a £20 Marks & Spencer voucher if the recommendation results in a sale*

New Customers Details

Name

Address

Postcode

Tel No

Email

Your Name, Address and Contact details

Name

Address

Postcode

Tel No

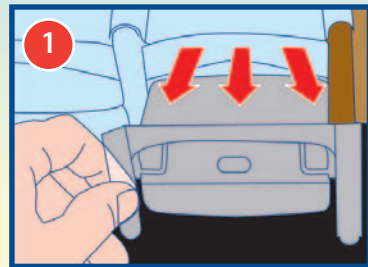
Email

*I understand that if this introduction results in a sale, I will receive a Marks & Spencers voucher to the value of £20.00. There is no limit to the number of potential introductions you may send. Minimum order value to entitle you to the above offer is £150.

POLYCOOL LTD
 CHURCH LANE
 KINWARTON
 ALCESTER
 WARWICKSHIRE
 B49 6HB

Plastmo Everlite, Ultralite 500 or similar wide span roof systems

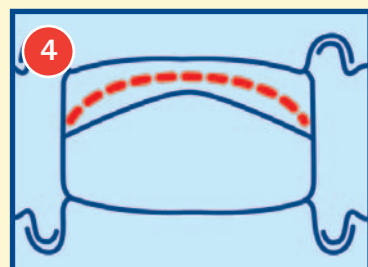
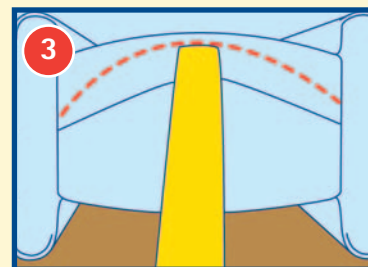
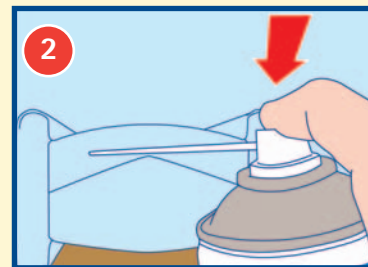
Step-by-step installation guide



Plastmo Everlite

Remove fascia board/end channel plugs. (diagram 1)

Spray a small amount of silicone spray into the top channel of the roof. (diagram 2)



Punch a hole through the insert and using the insertion rod, offer the insert to the top channel to form an 'n-shape curve'. If installing gold Polycool, the gold side must face down into the conservatory. (diagram 3)

Ensure the insert is pushed right to the top of the channel and check that the film fits correctly. (diagram 4)

Remove the insertion rod and cut the insert to the required length with a pair of scissors or a Stanley knife flush with the end of the roof channel.

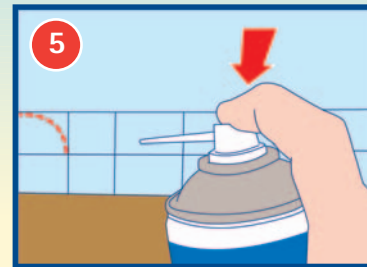
Once all channels have been installed with 'Polycool' replace fascia board or end channel plugs and re-fit the guttering if removed.

N.B. Ensure the film lies correctly in the channel, paying particular attention to the top end.

Introduction

Polycool inserts can also be fitted to Plastmo Everlite, Ultralite 500 and other wide span roof systems.

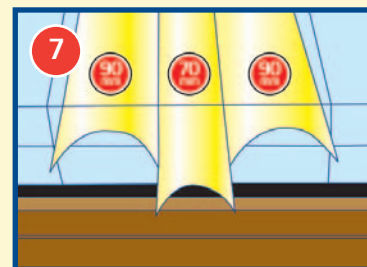
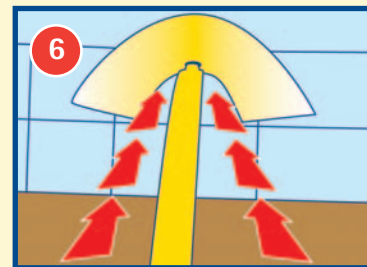
We recommend fitting these inserts in an 'n-shape curve' for maximum efficiency and practicality. These roof systems will not require a breather tape to be fitted.



Ultralite 500

Remove fascia board. Spray a small amount of silicone spray into the top channel of the roof. (diagram 5)

Punch a hole through the insert and using the insertion rod, offer the insert to the top channel to form an 'n-shape curve'. If installing gold Polycool, the gold side must face down into the conservatory. (diagram 6)



We have supplied 2 widths of film for Ultralite 500 roof systems, you will need to fit the 70mm wide insert in the centre channel and the 90mm insert in all other channels. (diagram 7)

Ensure the insert is pushed right to the top of the channel and check that the film fits correctly. (diagram 8)

Remove the insertion rod and cut the insert to the required length with a pair of scissors or a Stanley knife flush with the end of the roof channel.

Once all channels have been installed with 'Polycool' replace fascia board and re-fit guttering if removed.

N.B. Ensure the film lies correctly in the channel, paying particular attention to the top end.

After sales service

Polycool staff are available to assist you at all stages of purchase and installation.

If at any stage you require any technical or general assistance please contact us on 01789 766880 or email-pol@polycool.co.uk.

Our hours of business are;

Monday - Friday	9.00am - 5.30pm
Saturdays - Winter hours	10.00am - 12.00pm (October-March)
Saturdays - Summer hours	9.30am - 4.30pm (March-September)
Sundays - Summer only	10.00am - 4.00pm (March-September only)

Polycool fitting service



If time is at premium and you wish to avail the services of our fitting team please call our sales office on 01789 766880 for a competitive quotation.

Our fully experienced fitting teams are available nationally and can remove most roof panels, (i.e valleys), roof vents and guttering.

If you require any further information about Polycool products, please don't hesitate to contact us.

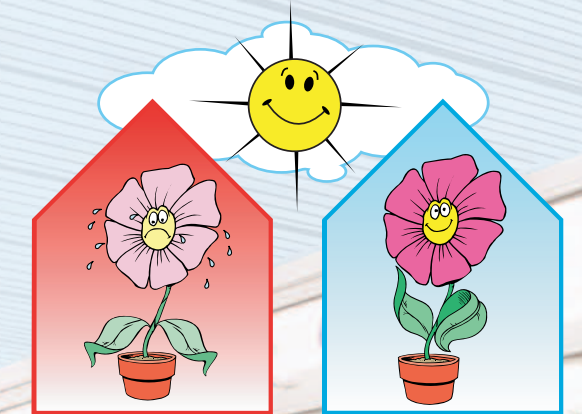
We will be delighted to help you.

'Polycool Your Conservatory'

polycool - More than a shade better

Polycool Ltd. • Church Lane • Kinwarton
 Alcester • Warwickshire • B49 6HB
 Tel: 01789 766880 • Fax: 01789 764162
 email: pol@polycool.co.uk • www.polycool.co.uk

Polycool reserve the right to revise and improve film specifications in line with product development.



conservatory like an oven?
 stay cooler in summer and warmer in winter



polycool

fitting guide

solar control inserts
 for all styles of conservatories with polycarbonate roofs

Tel: 01789 766880 www.polycool.co.uk